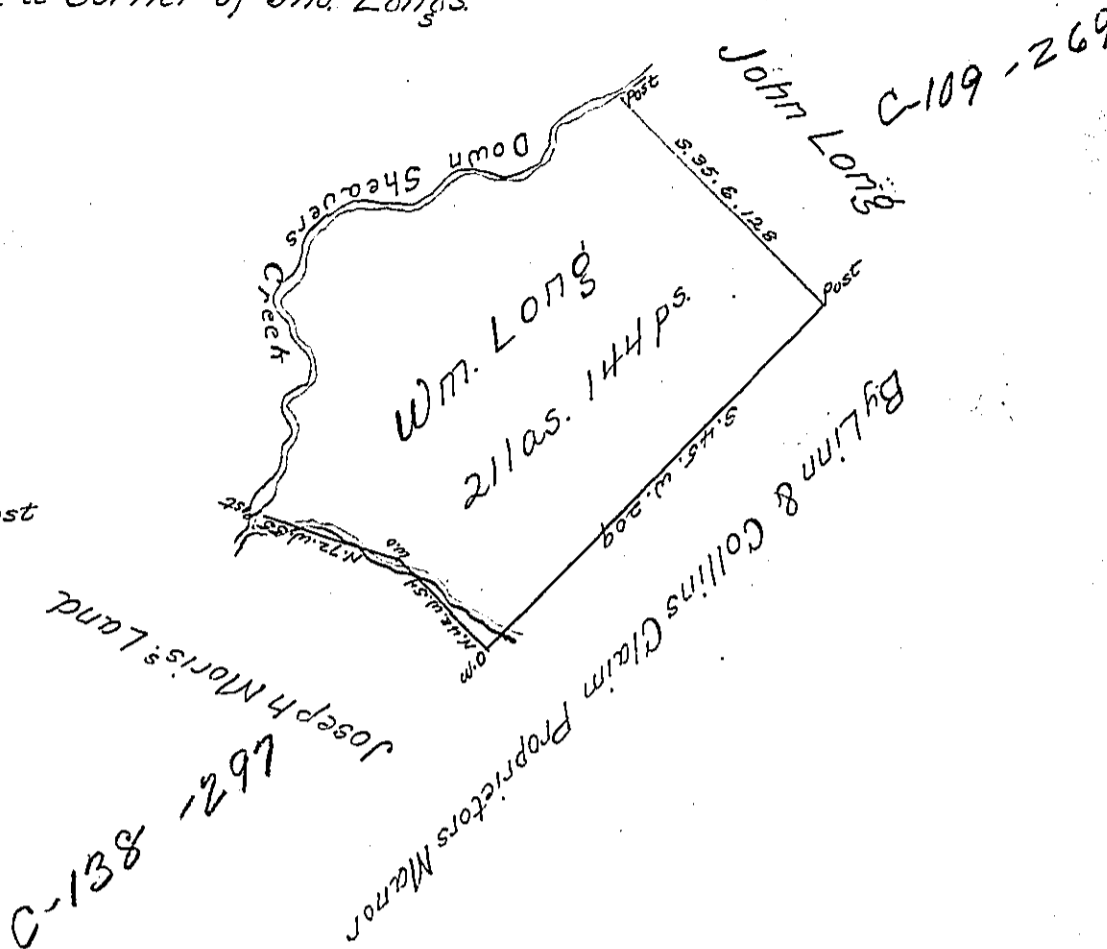


Courses & distances

Sheavers Creek from the post to the Post a Corner of Jno Longs.

25th. May 1785

- North 10
- N. 20. E. 48
- North 16
- 57 N. 27. E. 14
- N. 28. W. 44
- N. 45. E. 20
- N. 8. E. 18
- N. 85. E. 42
- N. 65. E. 36
- S. 75. E. 26
- N. 27. E. 40
- N. 85. E. 26 to post



Situate in Barre Township <sup>now</sup> Huntingdon County containing 211 as 144 ps and the usual allowance of six per cent for Roads Surveyed the 25th day of May 1785 in pursuance of a Warrant dated the 2<sup>d</sup> Day of November 1784

George Woode S.S.

To John Lukens Esqr. S.G.

IN TESTIMONY that the above is a copy of the original remaining on file in the Department of Internal Affairs of Pennsylvania, made conformably to an Act of Assembly approved the 16th day of February, 1833, I have hereunto set my Hand and caused the Seal of said Department to be affixed at Harrisburg, this second day of June 1903

*Isaac P. Brown*  
Secretary of Internal Affairs.